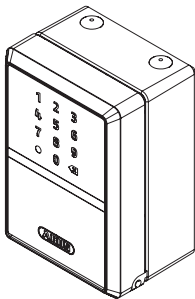


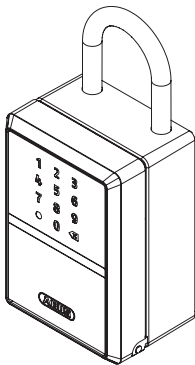


Security Tech Germany

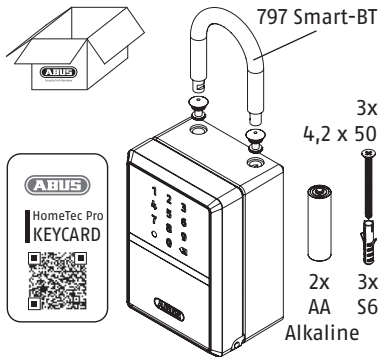
787/797 Smart-BT KeyGarage™



787 Smart-BT



797 Smart-BT



(DE) Bedienungsanleitung	3
(GB) (US) (CA) Operating instructions	20
(FR) (CA) Instructions d'utilisation	39
(NL) Gebruikshandleiding	57
(IT) Istruzioni d'uso	74
(ES) Instrucciones de funcionamiento	91
(DK) Betjeningsvejledning	108
(SE) Bruksanvisning	125
(NO) Driftsveiledningen	142
(FI) Käyttöohjeet	159

(DE) Vielen Dank, dass Sie sich für dieses ABUS Produkt entschieden haben!

Bitte lesen Sie diese Anleitung vor der Inbetriebnahme sorgfältig durch. Bewahren Sie die Anleitung auf und weisen Sie jeden Nutzer auf die Bedienung des Produktes hin.

Für die Erstinbetriebnahme Ihrer smarten KeyGarage™ benötigen Sie ein Bluetooth®-fähiges Smartphone (Bluetooth 4.0 LE und höher), aktuell supportete iOS- oder Android-Softwareversion und die kostenlose ABUS HomeTec Pro App für iOS oder Android.

Die Bedienung der smarten KeyGarage™ ist sowohl per ABUS HomeTec Pro App als auch per Tastenfeld mit einem automatisch generierten Code möglich.

Der Inhalt dieser Bedienungsanleitung entspricht dem aktuellen Stand zur Zeit der Drucklegung. Aufgrund von Updates und Weiterentwicklungen kann die gedruckte Anleitung zum Zeitpunkt der Inbetriebnahme des Produktes eventuell veraltet sein. Bitte besuchen Sie daher unsere Internetseite **www.abus.com** und geben Sie „**787 Smart-BT**“ oder „**797 Smart-BT**“ in das Suchfeld ein. Auf der Produktseite finden Sie unter „**Downloads**“ stets die aktuelle und vollumfängliche Version der Bedienungsanleitung.

(GB) (US) (CA) Thank you for choosing this ABUS product!

Please read this guide carefully before use. Keep these instructions and provide all users with instruction on how to use it.

To set up your smart KeyGarage™ for the first time, you will need a Bluetooth®-enabled smartphone (Bluetooth 4.0 LE or higher), a currently supported iOS or Android software version and the free ABUS HomeTec Pro app for iOS or Android.

The smart KeyGarage™ can be operated using either the ABUS HomeTec Pro app or the keypad with an automatically generated code.

The contents of this installation and operating manual reflect the current status at the time of printing. The printed manual may be outdated at the time of the product's entry into service due to updates and further developments.




We therefore ask you to visit our website **www.abus.com** and enter „787 Smart-BT“ or „797 Smart-BT“ into the search bar. You'll always find the current and complete version of the installation and operating instructions on the product page under the „Downloads“ column.

Opening the key compartment

- Can be done in delivery state without Bluetooth® / code
- Via Bluetooth®
- Via generated code

Warnings and safety instructions

Please read and observe these safety instructions. Non-observance of these instructions could lead to fire, injury to persons and/or device damage!

Symbol	Signal word	Remark
	Caution	Security note indicating a risk of injury or health hazards. Failure to observe these warnings can lead to injury.
	Attention	Warning about possible damage to the device. Failure to observe these warnings can lead to material damage or malfunctions.
	Notice	Informative note



Caution

- Keep packaging material and small parts away from children: Danger of suffocation!
- Danger of pinching fingers when closing the KeyGarage™.
- Keep batteries out of the reach of children. Children may put batteries in their mouths and swallow them. This can cause serious harm to their health. Seek immediate medical attention in this event!
- Batteries must be inserted with the correct polarity (+ and -).
- Empty batteries must be removed or replaced immediately.
- Different battery types, or new and used batteries, must not be mixed.
- The battery terminals must not be short-circuited.
- Risk of burns from contact with leaking or damaged batteries! In these cases, use suitable protective gloves and clean the battery compartment with a dry cloth.
- Batteries must not be dismantled, punctured, damaged, short-circuited, heated, charged or thrown into an open fire (risk of explosion!).

- Do not use or store the product in areas where the temperature could reach below -10°C or above +50°C.
Do not expose the product to direct sunlight for long periods of time!

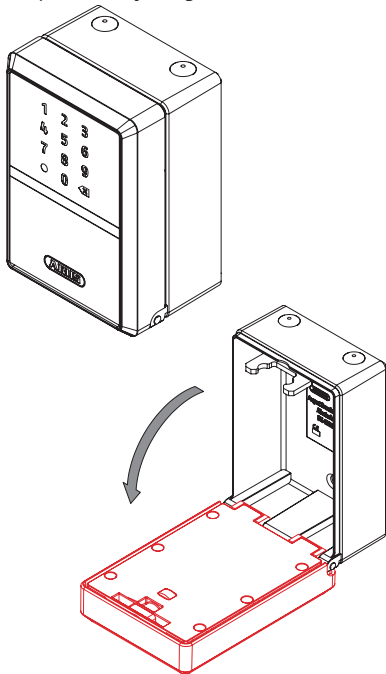


Attention

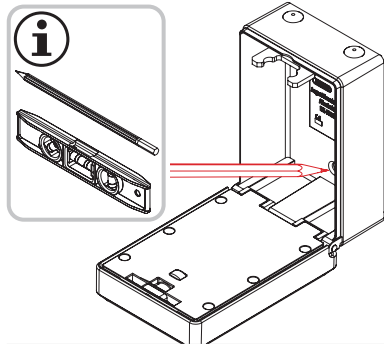
- Only open the key compartment of the KeyGarage™, never the housing with the electronic unit.
- For 797 Smart-BT: When changing the shackle of the smart KeyGarage™, make sure that the lock does not fall down.
- Make sure that the smart KeyGarage™ is always properly locked.
- The smart KeyGarage™ must not be operated lying down in unprotected outdoor areas: penetrating moisture can damage the electronic unit or objects in the key compartment.
- When dismantling the shackle, put on the silicone sealing plugs so that no moisture can get into the smart KeyGarage™.
- The product may only be used for its intended purpose. Any modification to the product is prohibited.

787 Smart-BT wall mounting

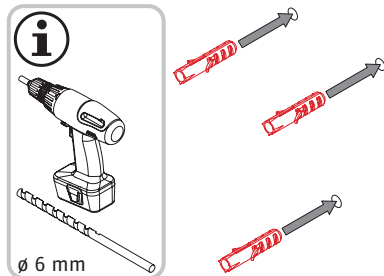
1. Open the KeyGarage™



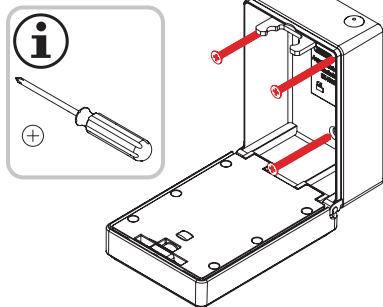
2. Place the open KeyGarage™ vertically in the desired position. Mark the drill holes, align with spirit level.



3. Drill holes and insert dowels.

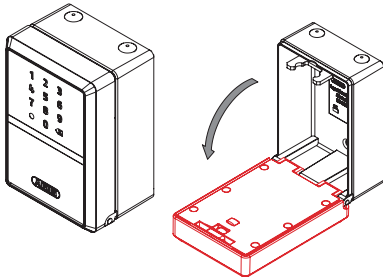


4. Screw on KeyGarage™ and close the compartment.

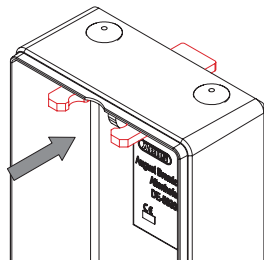


Mounting the shackle 797 Smart-BT / changing shackle

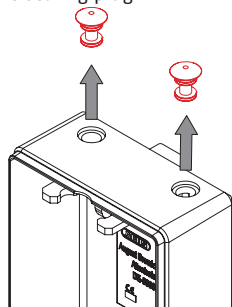
1. Open KeyGarage™



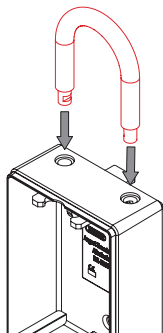
2. Push the bolt backwards



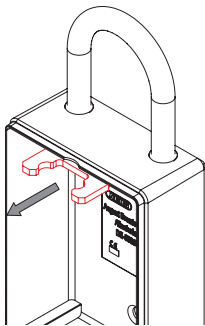
3. Remove silicone sealing plug



4. Insert shackle



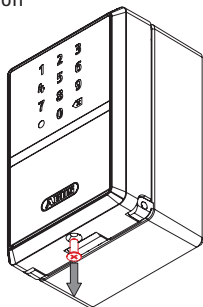
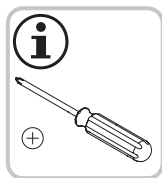
5. Push the bolt forward again



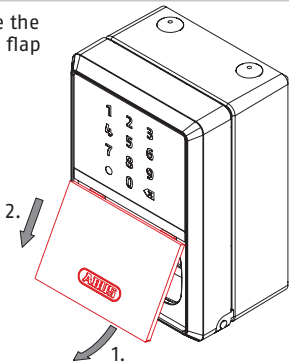
6. Close KeyGarage™

Insert or change batteries

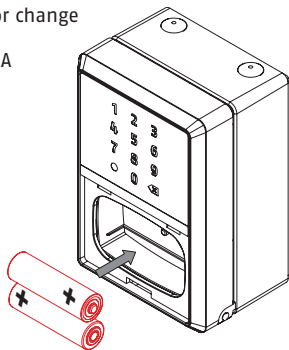
1. Loosen the screw on the underside



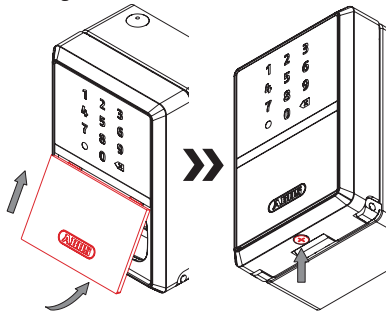
2. Remove the protective flap



3. Insert or change batteries
(2x 1.5 V AA
Alkaline)



4. Replace the protective flap
and tighten the screw



HomeTec Pro App









HomeTec Pro

- Download the ABUS HomeTec Pro app and enable Bluetooth® on your smartphone.
- Start the app and follow the instructions in the app.
- Pay attention to the assignment of the different keycards to the products, and always scan the correct keycard. Never leave the keycard in the smart KeyGarage™.
- To program the smart KeyGarage™, start by pressing the button „Add HomeTec Pro / component“.
- **It is imperative to keep the ABUS keycard(s) in a safe place even after completing the setup!** If you forget your password, you can reset and reassign it by scanning the QR code. Do not give the card to third parties.

To guarantee proper function, we expressly recommend performing updates in the app and software/firmware updates for HomeTec Pro components in

a timely manner. The app will provide information on this. You can also perform the respective update in the component's settings.

LED signalling

Signalling	Meaning
	„Unlocked“ (3x green) The KeyGarage™ is unlocked
	„Locked“ (1x green) The KeyGarage™ is closed and locked
	„Out of order“ (red) PIN entered incorrectly / without authorisation
	„not currently authorised“ (red) PIN entered without authorisation for the current time
	„Bluetooth® Activity“ (blue) As long as Bluetooth® is active and no numbers have been entered
	„LowBatt warning“ (orange) Signalling takes place before each locking and unlocking until the batteries have been replaced

Technical data

Dimensions	83 x 120 x 63 mm
Weight	approx. 883 grams
Storage space	up to 20 keys (standard front door keys) or up to 30 plastic cards (credit card format) or entire bunches of keys
Operating temperature range	-10°C to +50°C
Radio frequency	2,402 GHz - 2,480 GHz
Max. radiated transmission power	< 10dBm eirp
Encryption	AES-128 bit

EU Declaration of Conformity

Hereby, ABUS August Bremicker Söhne KG declares that the radio equipment types 787 / 797 Smart-BT are in compliance with Directives 2014/53/EU and 2011/65/EU. The full text of the EU Declaration of conformity is available at the following internet address: docs.abus.com

UK Declaration of Conformity

Hereby, ABUS August Bremicker Söhne KG declares that the radio equipment types 787 / 797 Smart-BT are in compliance with the Radio Equipment Regulations 2017 and the Restriction of the Use of Certain Hazardous Substances in Electrical and Electronic Equipment Regulations 2012. The full text of the UK declaration of conformity is available at the following internet address: docs.abus.com

Disposal

It is your responsibility to delete all stored personal data prior to disposal of the product.

This product contains valuable raw materials. At the end of its service life, dispose of the product in accordance with the applicable legal requirements. Electrical appliances, rechargeable batteries and batteries must not be disposed of with household waste. Disposal must be carried out in accordance with Directive 2012/19/EU on waste electrical and electronic equipment (WEEE), or Directive 2006/66/EC on batteries and accumulators and waste batteries and accumulators. Dispose of the packaging according to type. Separate the cardboard, foil and plastic elements for recycling. Please contact the local authority respon-

sible for disposal if you have any queries. You can obtain information on collection points for your old appliances, for example, from the local municipal or city administration, the local waste disposal companies, or your specialist dealer.



WEEE-Reg.-Nr. DE79663011

Warranty

ABUS products are designed, manufactured and tested in accordance with applicable regulations with great care. The warranty exclusively covers faults that are caused by material or manufacturing defects. If a material or manufacturing defect can be proven, the product will be repaired or replaced at the discretion of the warrantor. In such cases, the warranty ends with the termination of the original warranty period. Any further claims are expressly excluded. ABUS assumes no liability for defects or damage that has been caused by external influences (e.g. transport, external forces), improper use, normal wear and tear or non-compliance with this operating and installation instructions document. If a warranty claim is asserted, the product must be returned with the original receipt with date of purchase and a brief written description of the fault.

Subject to technical alterations. No liability for mistakes and printing errors.

Licence texts

The Bluetooth® word mark and logos are registered trademarks owned by Bluetooth SIG, Inc. and any use of such marks by ABUS is under license. Other trademarks and trade names are those of their respective owners.

Apple and the Apple logo are trademarks of Apple Inc., registered in the U.S. and other countries and regions. App Store is a service mark of Apple Inc.

Google Play and the Google Play logo are trademarks of Google LLC.

USA-required information regarding products with FCC certification and SDoC

Contains Transmitter Module FCC ID: XPYANNAB1

Changes or modifications not expressly approved by the party responsible for compliance could void the user's authority to operate the equipment.

NOTE: This equipment has been tested and found to comply with the limits for a Class B digital device, pursuant to part 15 of the FCC Rules. These limits are designed to provide reasonable protection against harmful interference in a residential installation.

This equipment generates, uses and can radiate radio frequency energy and, if not installed and used in accordance with the instructions, may cause harmful interference to radio communications. However, there is no guarantee that interference will not occur in a particular installation. If this equipment does cause harmful interference to radio or television reception, which can be determined by turning the equipment off and on, the user is encouraged to try to correct the interference by one or more of the following measures:

- Reorient or relocate the receiving antenna.
- Increase the separation between the equipment and receiver.
- Connect the equipment into an outlet on a circuit different from that to which the receiver is connected.
- Consult the dealer or an experienced radio/TV technician for help.

Supplier's Declaration of Conformity 47 CFR § 2.1077 Compliance Information

Unique Identifier: 787 Smart-BT KeyGarage™ and 797 Smart-BT KeyGarage™

Responsible Party –
U.S. Contact Information
ABUS USA LLC
23910 N 19th Avenue, Unit #56
Phoenix, AZ 85085-1850

Phone: 623-516-9933

FCC Compliance Statement

This device complies with Part 15 of the FCC Rules. Operation is subject to the following two conditions: (1) This device may not cause harmful interference, and (2) this device must accept any interference received, including interference that may cause undesired operation.

Canada-required information regarding products with ICES certification and SDoC

Contains IC: 8595A-ANNAB1
CAN ICES-003 (B)

This device contains licence-exempt transmitter(s)/receiver(s) that comply with Innovation, Science and Economic Development Canada's licence-exempt RSS(s). Operation is subject to the following two conditions:

1. This device may not cause interference.
2. This device must accept any interference, including interference that may cause undesired operation of the device.

FR CA Merci d'avoir choisi ce produit ABUS !

Veillez lire cette notice attentivement avant la mise en service. Conservez cette notice d'utilisation et donnez à tous les utilisateurs les instructions sur la façon de l'utiliser. Pour la première mise en service de votre KeyGarage™ intelligent, vous avez besoin d'un smartphone équipé d'une fonction Bluetooth® (Bluetooth 4.0 LE et supérieur), de la version logicielle iOS ou Android actuellement prise en charge et de l'application gratuite ABUS HomeTecPro pour iOS ou Android.

Le fonctionnement du KeyGarage™ intelligent est possible à la fois via l'application ABUS HomeTec Pro et via le clavier avec un code généré automatiquement.

Le contenu de ce manuel de montage et d'utilisation correspond à l'état actuel du produit au moment de l'impression. En raison des mises à jour et des améliorations, le manuel imprimé peut être obsolète au moment de la mise en service du produit. Nous vous conseillons donc de vous rendre sur notre site Internet **www.abus.com** et de saisir « **787 Smart-BT** » ou « **797 Smart-BT** » dans le champ de recherche. Sur la page du produit, vous trouverez toujours la version actuelle intégrale du manuel de montage et d'utilisation dans l'onglet « **Téléchargements** ».



UK ABUS (UK) Ltd.
CA Unit 8 Third Way Corner,
Avonm.
BS11 9HL Bristol, GB



© ABUS 2021
ABUS August Bremicker Söhne KG
D 58292 Wetter | Germany.
Tel.: +49 (0) 23 35 63 40 |
www.abus.com | info@abus.de

T390664 | V2 | I21